



APS Key.Reader

Program for communication with APS Key system modules

User's guide



techfass®

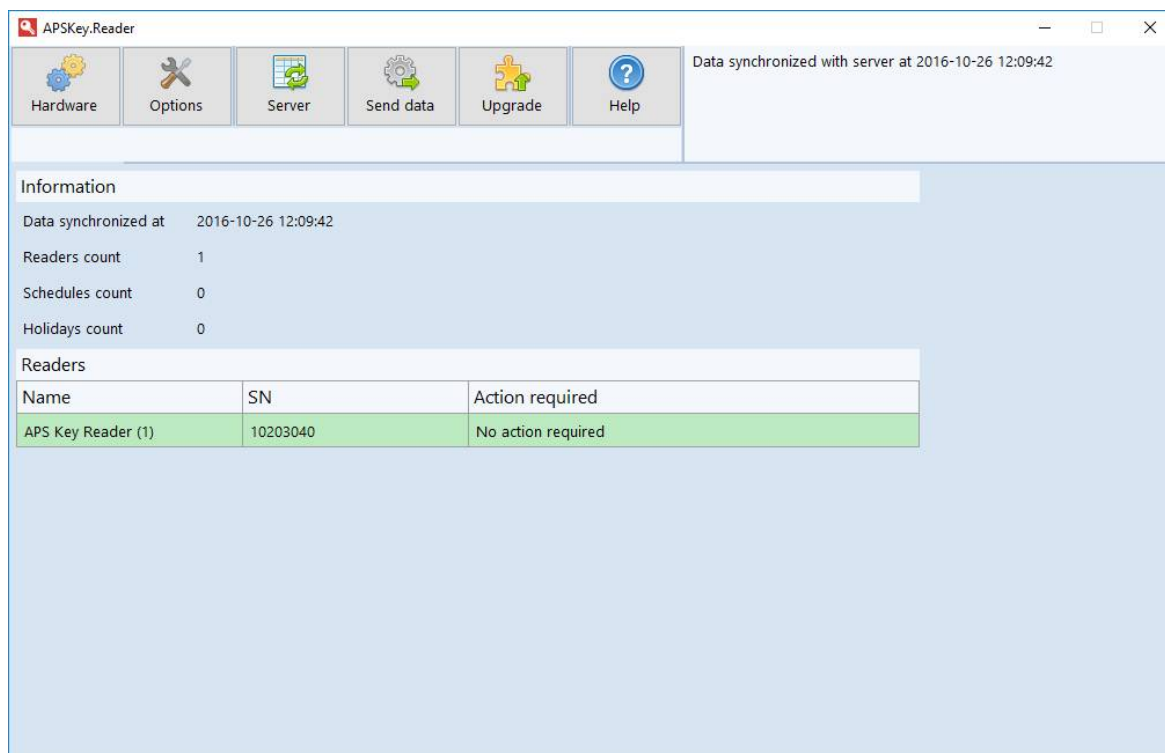
1 Content

1	Content.....	2
2	Product description	3
3	Program installation	3
3.1	System requirements	3
3.2	Installation.....	3
4	Program configuration	4
4.1	Communication converter	4
4.2	Web service for data synchronization.....	4
4.3	Language setting	4
4.4	Other options	5
4.5	Help	5
5	Working with the program.....	5
5.1	Information about system status	5
5.2	Data synchronization with APS Administrator database	5
5.3	Uploading data to APS Key reader	5
5.4	Upgrading reader license	6



2 Product description

The software product *APS Key.Reader* (pic. 1) is a tool for setting up the parameters of *APS Key* system reader modules when managing the system with *APS Administrator* program. The communication with readers is done using CON 211.USB communication converter. The data synchronization between the *APS Administrator* database and the program is done using the *APS Key.ReaderService* web service.



Picture 1: APS Key.Reader program

3 Program installation

3.1 System requirements

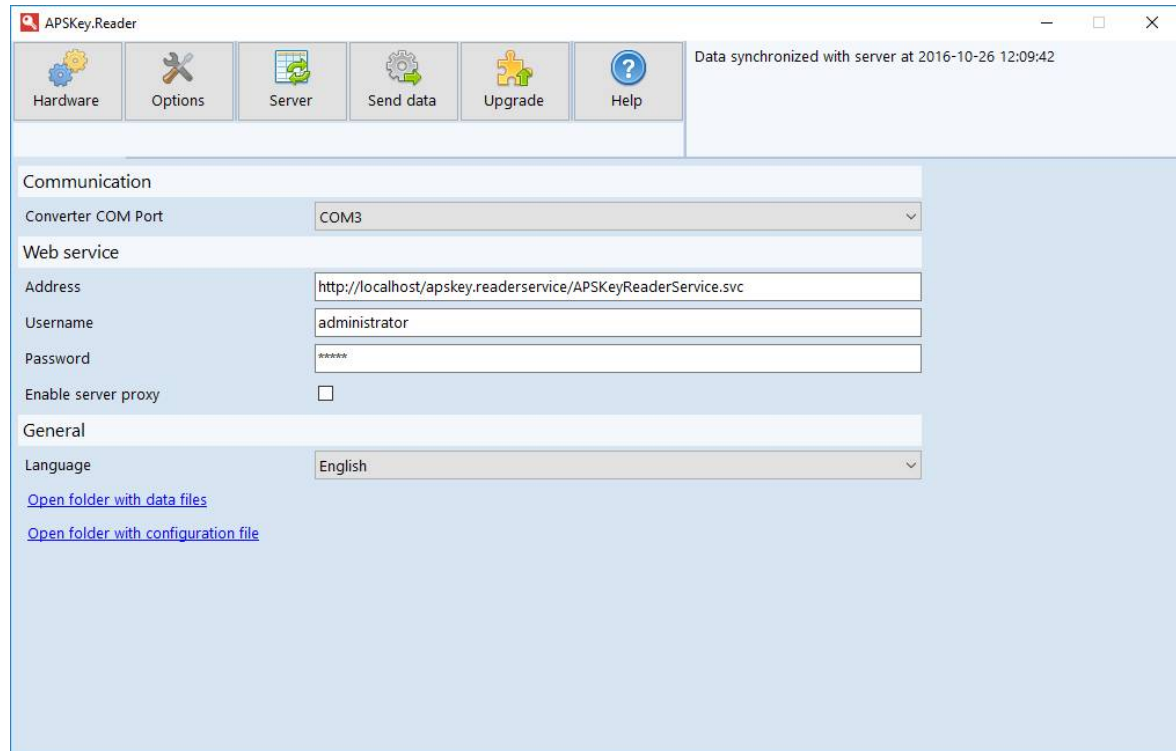
The program requires a PC with OS *MS Windows 7* or *newer* and *MS .NET Framework 4.0* installed to run.

3.2 Installation

The program installation is performed by its installer, which is available for download at the web pages www.techfass.cz. The program is installed in *Program Files\TechFass\APS Key.Reader* folder and there is a shortcut for its executable file created in the *Start* menu.

4 Program configuration

The program configuration is done at the *Options* tab (pic. 2).



Picture 2: Program options

4.1 Communication converter

The communication with *APS Key* readers is done using *CON 211.USB* communication converter. The COM port, which is assigned to the converter, is required to be set in the *Communication* section to the *Converter COM Port* parameter.

4.2 Web service for data synchronization

APS Key.ReaderService is a web service is used for data synchronization between the *APS Key.Reader* program and the *APS Administrator* database. After the service is operational, it is required to set up the *Address* parameter in the *Web service* section. Also, you need to set the user identity (*Username* and *Password*), which will be used to log the program operation. The identity has to be created in the *APS Administrator* program with data upload privilege. If the *proxy server* is used for connection to the web service, check the appropriate option.

4.3 Language setting

The language options of the program can be set in the *General* section by setting the *Language* parameter.



4.4 Other options

There are several other links available at the *Options* tab. The links are used to open the folder with program *data files* and the folder with program *configuration file*.

4.5 Help

This guide can be opened by clicking the *Help* button.

5 Working with the program

5.1 Information about system status

The *Hardware* tab contains information about the system current status.

The Information section contains global information about the APS Key system, and the information about the last data synchronization between the program and the database.

The list of the readers contains information about individual readers. Each reader can be in one of the following states:

- *No action required* – no action is required, the access rights and the configuration of the reader are actual and data are synchronized with the database
- *Upload data to reader* – the access rights and the configuration of the reader has changed since the last data upload, the data need to be uploaded to the reader
- *Synchronize data with service* – the access rights were changed in the reader or events were downloaded from the reader, data need to be synchronized with database

5.2 Data synchronization with APS Administrator database

The data synchronization with *APS Administrator* database is done by pressing the *Server* tab. After pressing the button, the system structure is transferred to the *APS Key.Reader* program and data is checked, if the last configuration uploaded to the system is actual. Furthermore, the events, which were previously downloaded by the *APS Key.Reader* program from the readers, are transferred to the *APS Administrator* database. After the synchronization is done, it is possible to check the current system status at the *Hardware* tab.

5.3 Uploading data to APS Key reader

To upload data in the *APS Key* reader it is necessary to connect to the reader using the *CON 211.USB* converter. The data upload process is started after pressing the *Send data* button. Configuration and the access rights in the reader are updated and the operating events are read from the reader. After the process is finished, it is possible to check the current system status at the *Hardware* tab.



5.4 Upgrading reader license

When it is necessary to update the license information in the reader, use the same procedure as described in the previous chapter to connect to the reader, and then press the *Upgrade* button. Select the appropriate file and the upgrade is performed then.